

2025 Autumn Industry Trends and Corporate Forum

eLAND Information(6925)

2025.08.22





Agenda

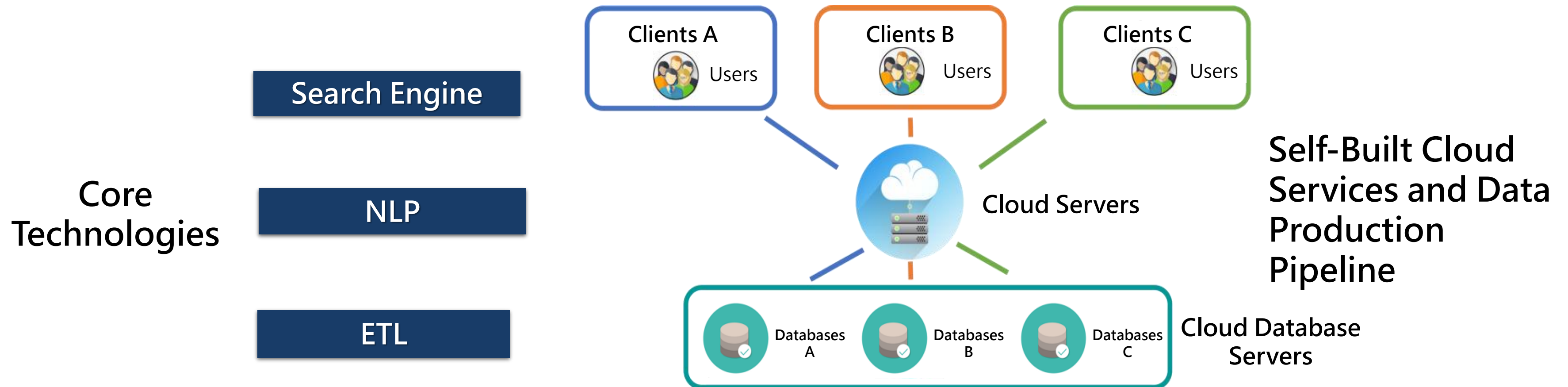
1. Introduction to Products and Business Model
2. Q2 Operational Performance Review
3. Conclusion & Interactive Q&A Session

1. Introduction to Products and Business Model

eLAND Information

Leading AI Data
Intelligence Company
(Stock Code: 6925)

- eLAND Information specializes in advanced AI technologies such as Semantic Analysis and Search Engines, offering high-quality intelligent data analysis services through a subscription-based SaaS (Software as a Service) cloud model. By continuously integrating Search Engine and Semantic Analysis capabilities with AI, we deliver cutting-edge AI solutions and application services to our clients.
- Our clients includes major corporations across industries such as high-tech, telecommunications, finance, retail, and other industries, maintaining a strong market presence among leading enterprises. eLAND Information stands as a benchmark for successful and profitable development of enterprise SaaS cloud services within the industry.



eLAND AI Intelligent Data Services

- AI-powered intelligent data analysis delivered through subscription-based Software as a Service (SaaS).

Cloud Data Analytics Services



The largest Social Listening platform



Customer behavior and preference
analyzing platform

Search Engine and NLP Licensing

Proprietary core engine delivering excellent
performance processing tens of billions of
unstructured data

AI Search

AI Search for KM Launched in 2024

Next-Generation GenAI Knowledge Management
Platform

AI Model Launched in 2025

Enterprise-Dedicated GenAI Model Services

AI Search for EC

Intelligent Labeling and Search Recommendation
System

Main Product – OpView Social Listening platform

The most real-time data

Hundreds of cloud servers
24/7 crawling
Integration of Multiple
Intelligence Data Sources

Extensive experience in deployment

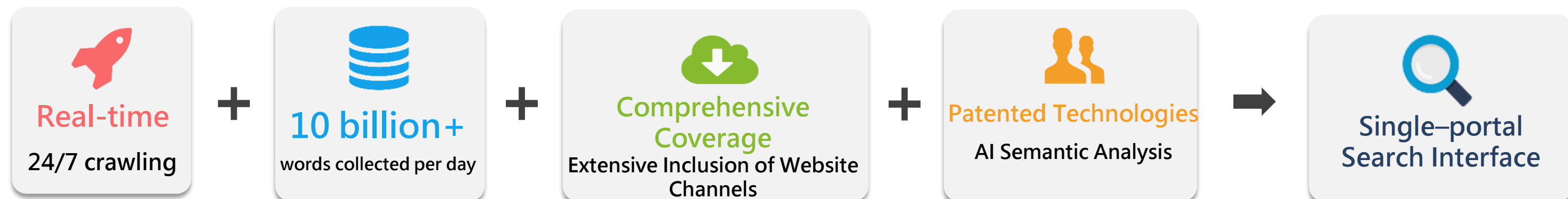
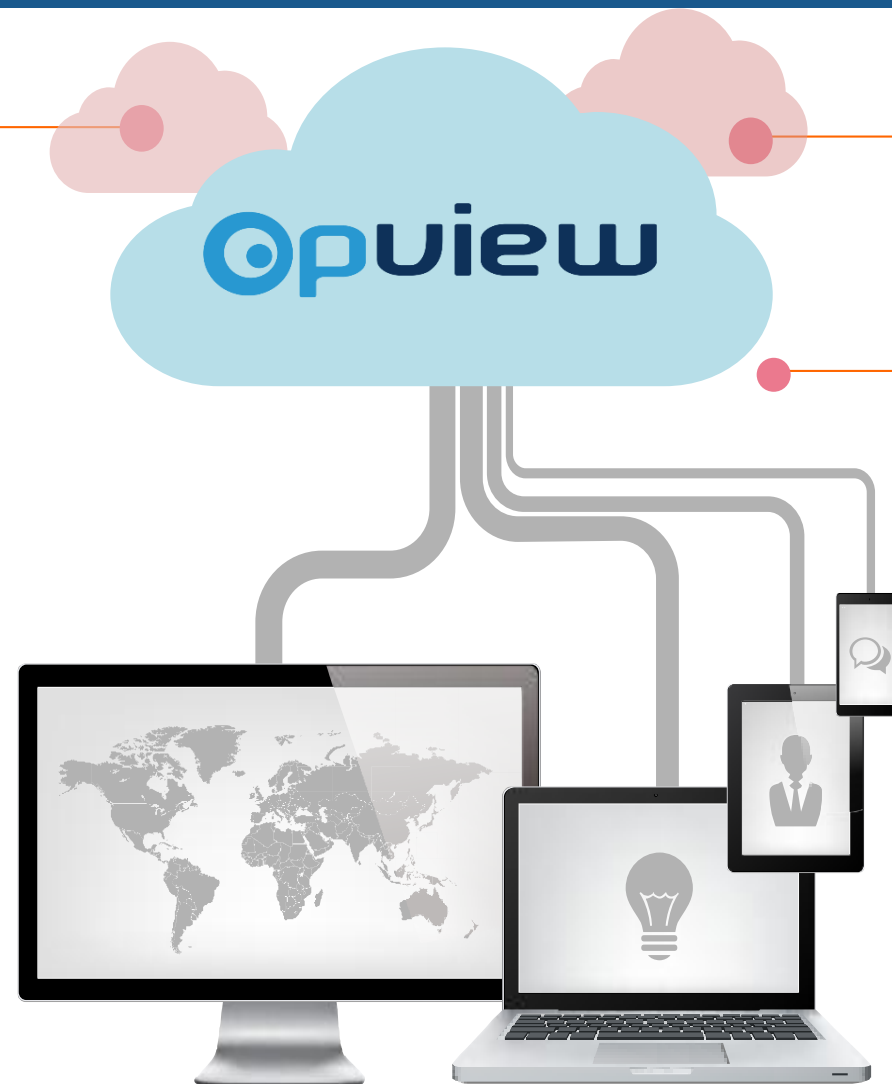
Authoritative analyzing methods
recognized by major institutions

The largest observation range

220 thousand+ channels
Operations scale far exceeds that of peers

Leading AI Semantic Analysis technology

Top service provider selected by
trusted organizations



AI Search for KM

AI Search for KM integrates Generative AI, Search, and NLP, aligning with enterprise permissions and security controls while increasing operational efficiency by over 40%.



AI knowledge assistant quick and accurate responses

- 💡 Rapid knowledge search
- 💡 Enhancing problem-solving efficiency
- 💡 24/7 service



AI Learning Coach Conversational Search and Response

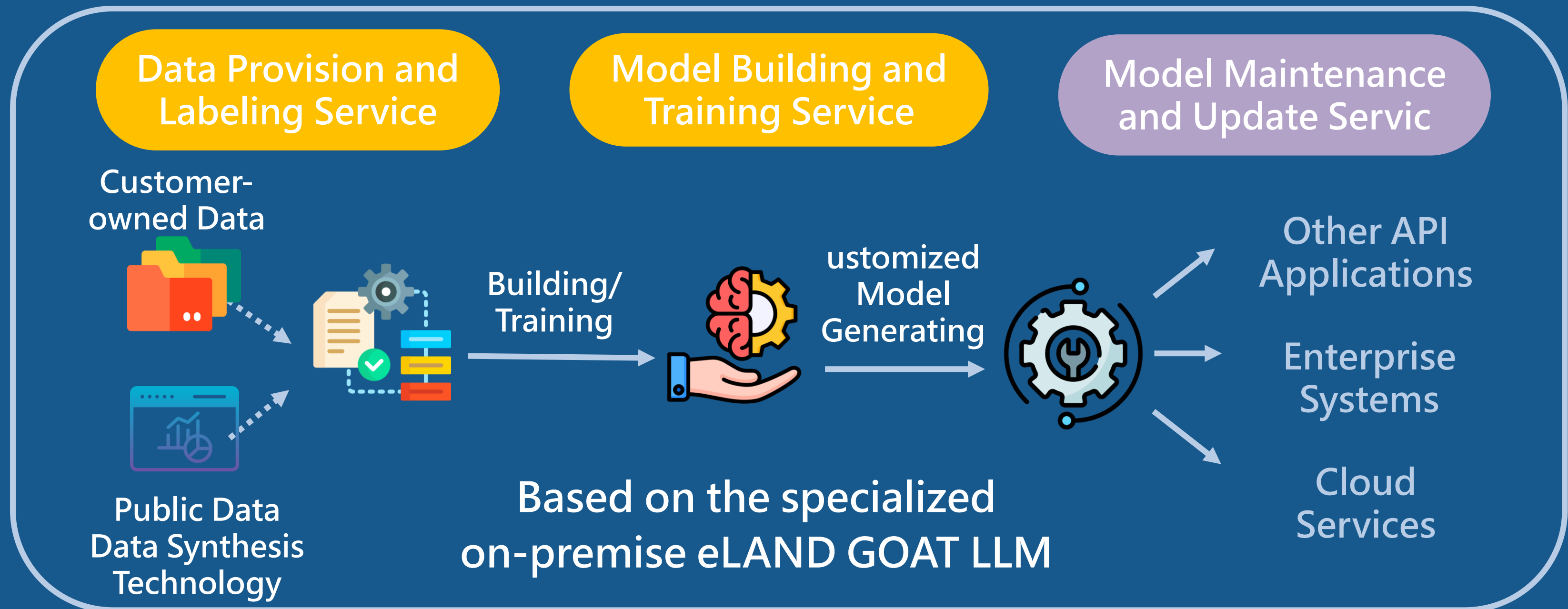
- 💡 Resolving Repetitive Issues
- 💡 Generates Key summarization
- 💡 Real-Time Online Q&A



AI Model

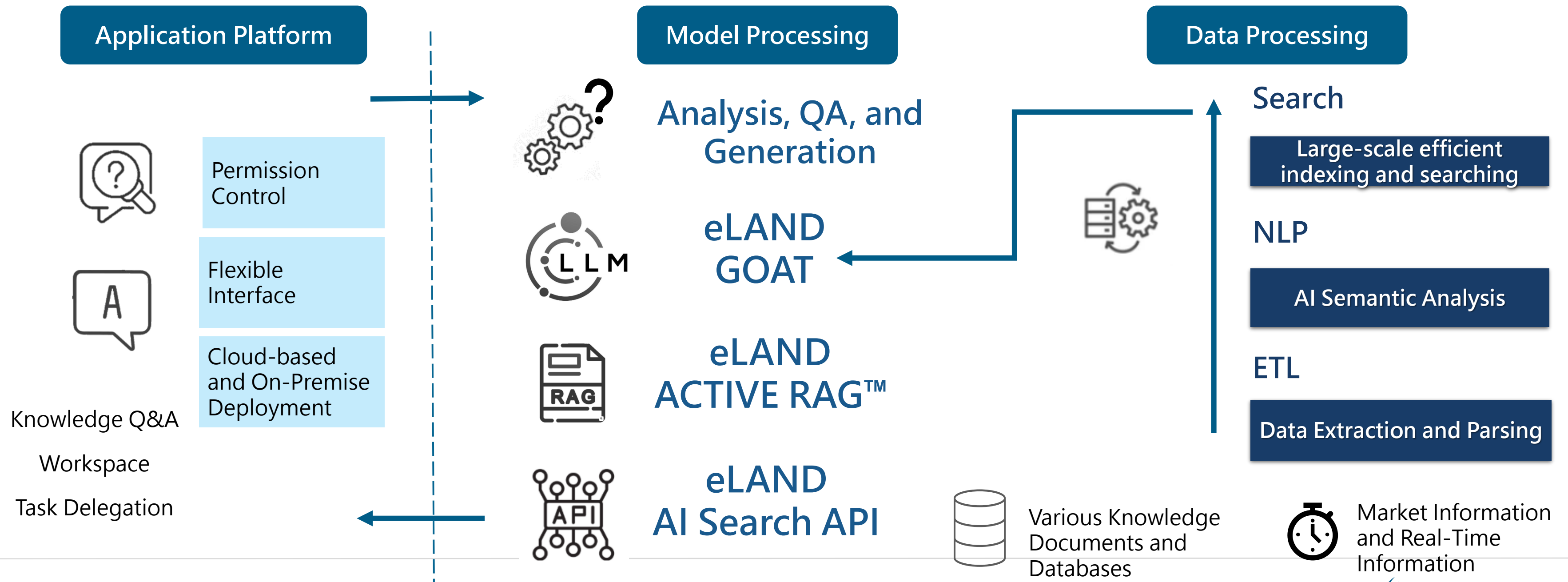
Develop customized models for enterprises. Enhancing Specific Scenario Capabilities with High Efficiency and Cost - Effectiveness. Align with Corporate Requirements and Information Security Standards

Scale Production Workflow



AI Search Intelligent Search Platform

- Integrates Search and Generative AI to connect the data enterprise needs, providing next-generation business operations hub.

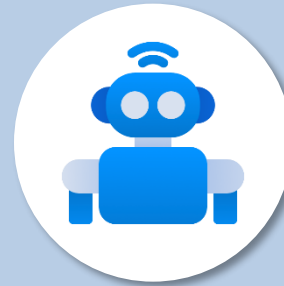


Our Competitive Advantages – Technology, Products, Operations, and Market Strengths



Proprietary Core Technologies

Compared to other companies in the same industry, our company has independently developed key AI intelligent data technologies, including search engines, LLM, and distributed processing architectures. These capabilities ensure high product performance that meets enterprise application requirements.



High-Quality Intelligent Data

From a product perspective, successful AI applications require both advanced technology and data. Our products integrate AI and data to provide comprehensive applications for enterprise. eLAND has amassed vast, complete, and high-quality dataset covering social media, audience profiles, and market informations from public online sources, which serves as crucial training material to enhance accuracy and capabilities of AI mode.



Large-Scale Data Platform

Operationally, eLAND built a data production pipeline that handles data capture, cleansing, aggregation, indexing, analysis, model building, and visualization. Our platform processes over 6 billion words daily, maintaining a continuous data workflow which can completes the process from ingestion to application within 15 minutes at fastest. Besides, multiple automated monitoring and backup systems of our platform create a strong entry barrier in the industry.



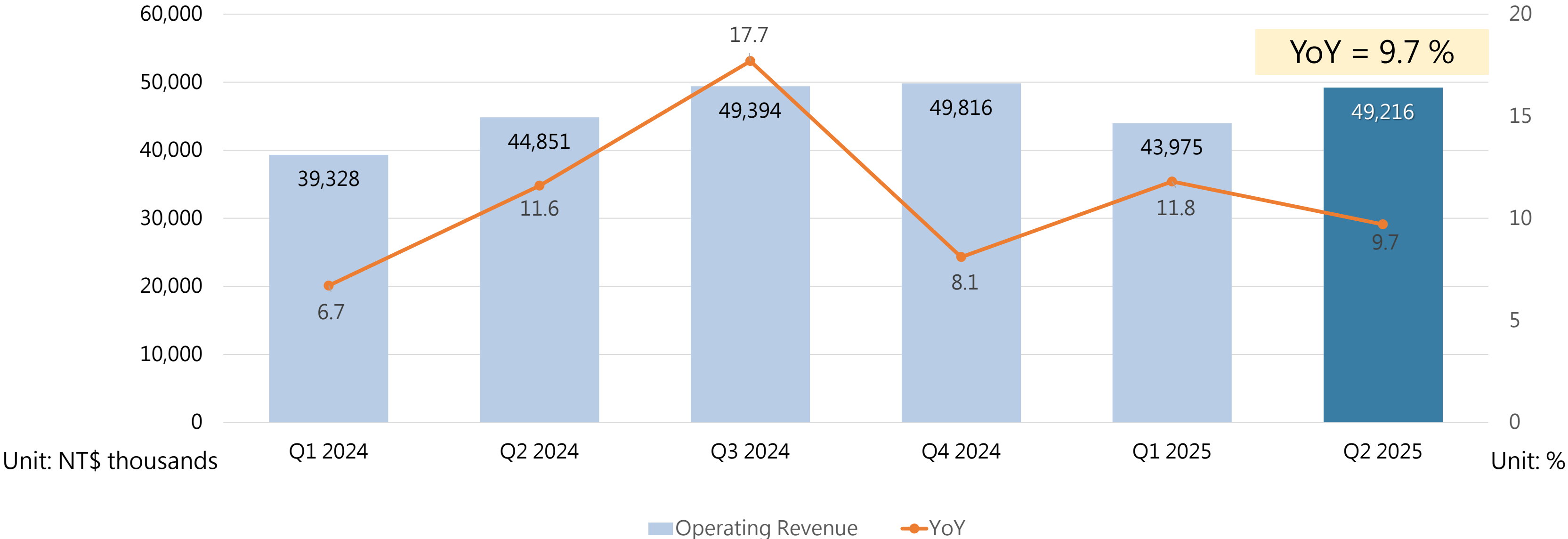
Strong Customer Base

In the market, our primary clients come from the finance, retail, advertising, marketing, and government industry. Many industry leaders in these fields are our customers. Their successful cases help eLAND to expand market expansion and scaling, while their feedback of using also helps us stay informed on the latest AI intelligent data applications and trends, reinforcing our leading position.

2. Q2 Operational Performance Review

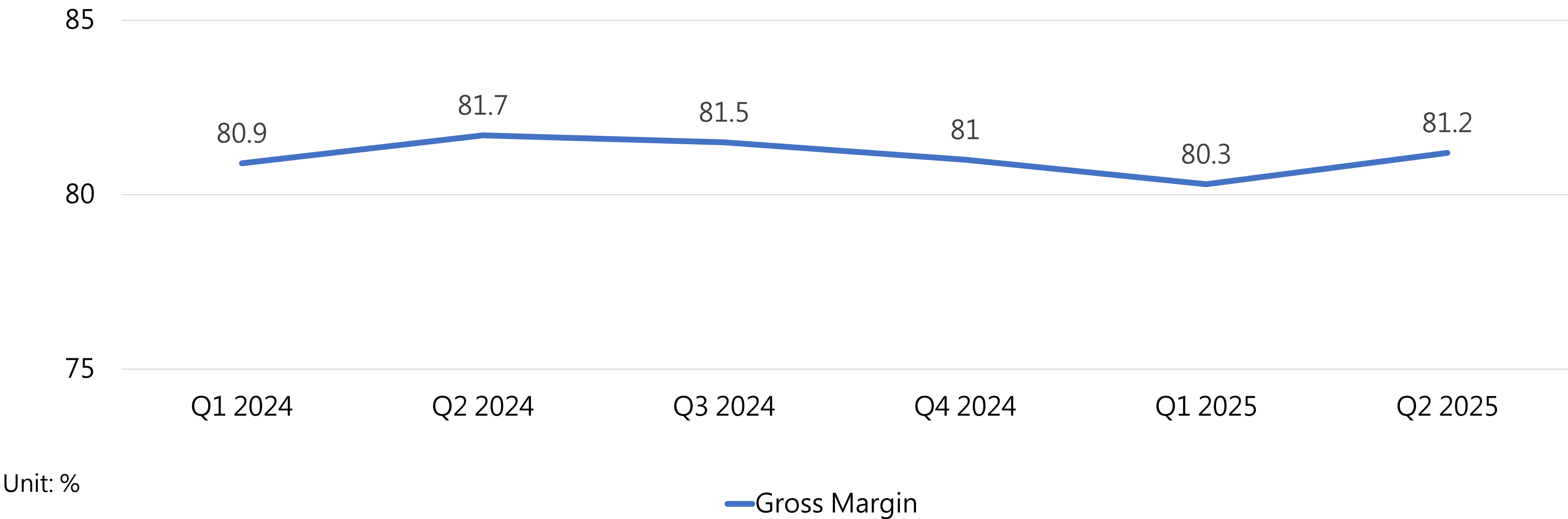
Operational Performance

Operating Revenue



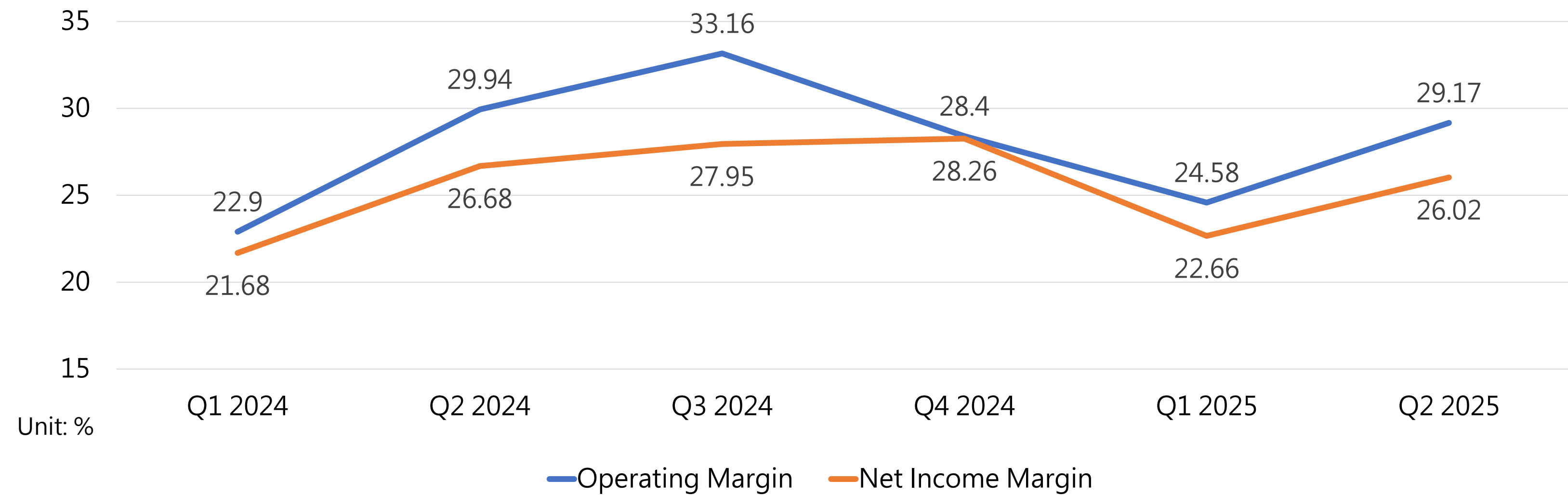
Operational Performance

Gross Margin



Operational Performance

Operating Margin / Net Income Margin



Operational Performance

- Main Products / Services

Main Products (Services)	Q4 2024			Q1 2025			Q2 2025		
	Operating Revenue	Revenue Share	Growth Rate (YoY)	Operating Revenue	Revenue Share	Growth Rate (YoY)	Operating Revenue	Revenue Share	Growth Rate (YoY)
Cloud Data Analytics Services	39,529	79.3 %	12.5 %	37,689	85.7 %	9.6 %	37,903	77.0 %	9.4 %
AI Search	7,823	15.7 %	12.2 %	5,374	12.2 %	31.9 %	10,425	21.2 %	16.2 %
Search Engine Software and Others	2,464	5.0 %	-37.7 %	912	2.1 %	5.6 %	888	1.8 %	-27.3 %
Total	49,816	100 %	8.1 %	43,975	100 %	11.8 %	49,216	100 %	9.7 %

Unit: NT\$ thousands

Q2 Product Development

Cloud Data Analytics Services

OpView Insight 5.1 Launch

- Automated reports with AI-driven recommendations: Marketing Analysis / PR Response
- Multi-topic overview for monitoring multiple subjects at once
- Article Exploration Assistant with 4 AI templates: Policy Opinion, Business Opportunities, Crisis Management, Marketing Strategy

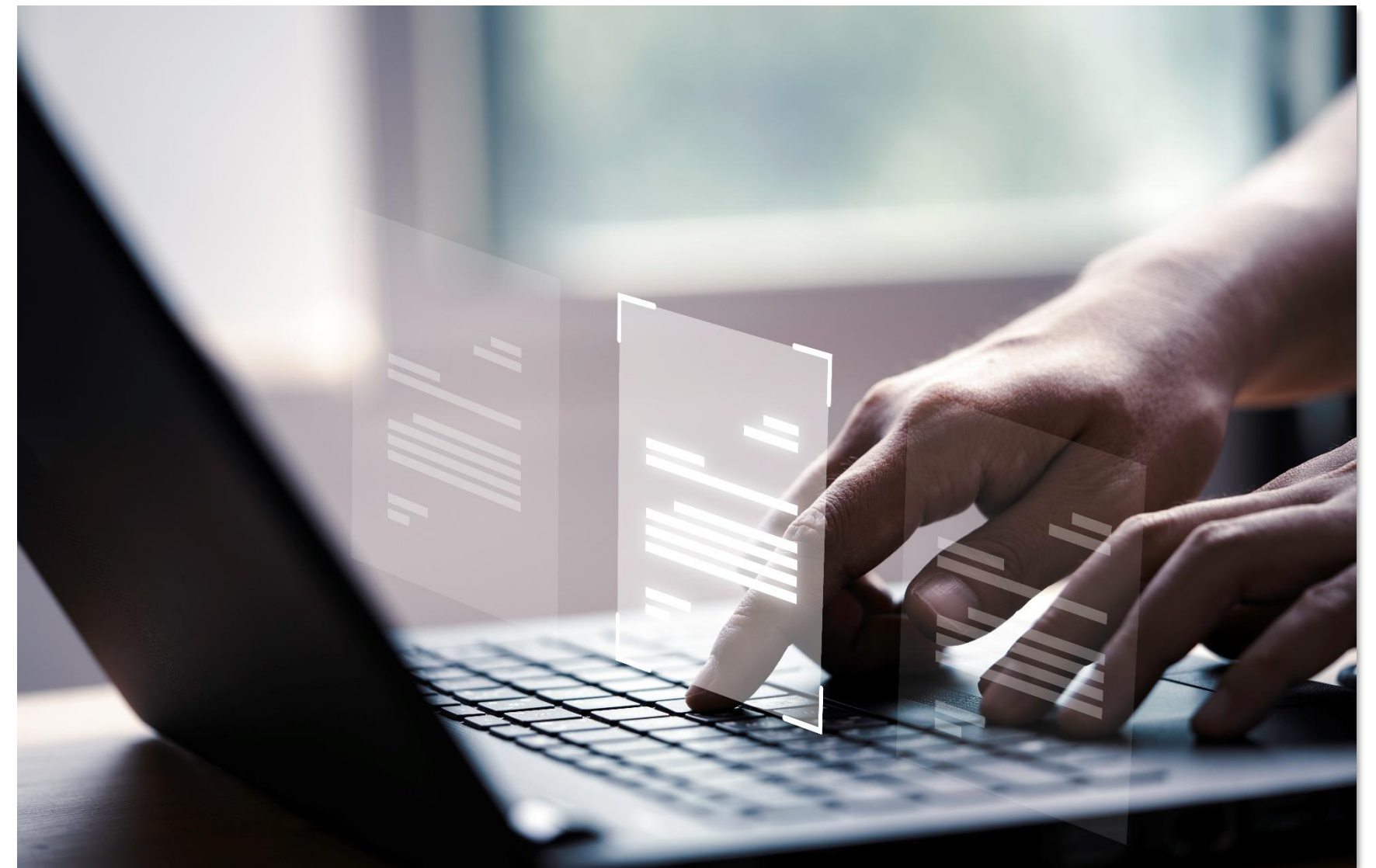


Q2 Product Development

AI Search

AI Search for KM 3.1 Launch

- Provide Workspace File Summaries
- Introduce DeepSearch file answering capabilities
- Enhance user interface
- Add conversation history summarization



Q2 Business Development

AI Search

Public Governance

Digital Marketing

Security Intelligence
& Investigation

Financial
Intelligence
Assistant

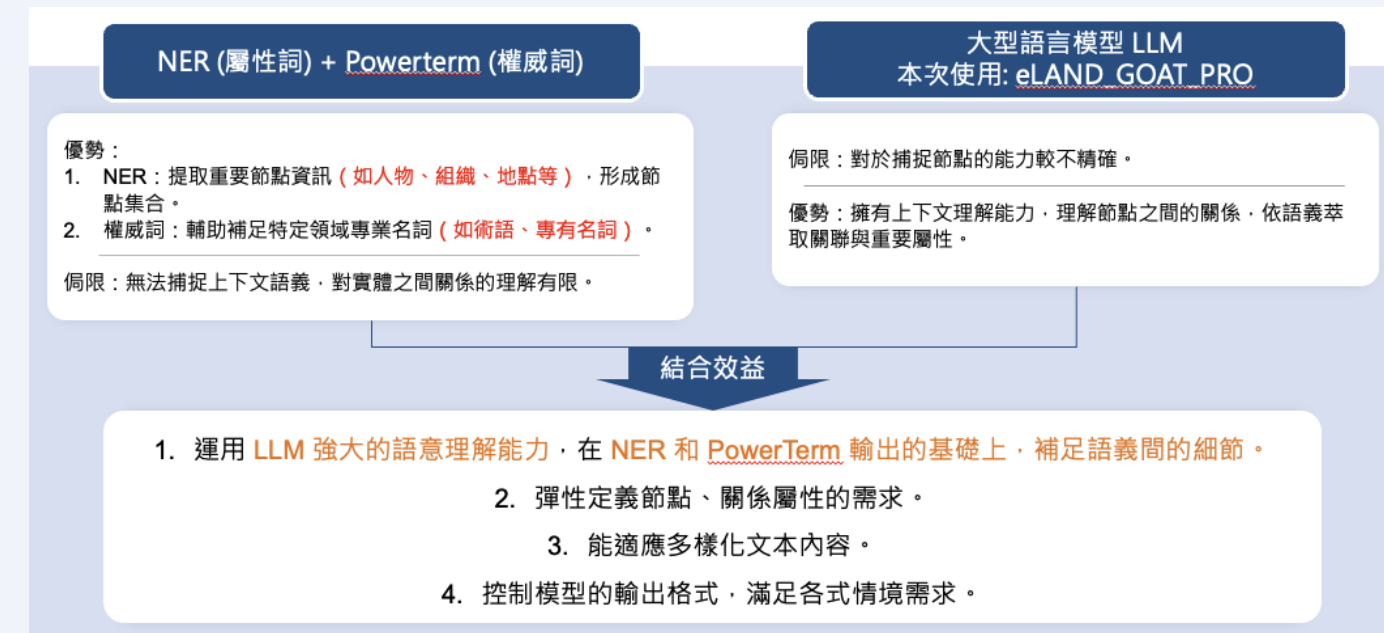
Focused on four major areas, we successfully launched multiple large-scale projects in Q2, continued expanding our business footprint, and achieved the set performance targets.

Security Intelligence & Investigation

In Q2, we secured key clients from security and intelligence units, serving as their partner in crime prevention and investigation.

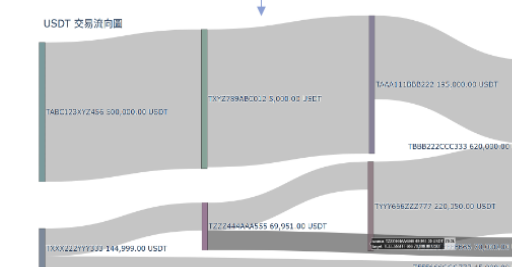
- Construction of virtual currency transaction investigation systems
- Extraction of relationship mapping between individuals
- Automated generation of investigation reports
- Authentication and verification of investigation reports

Entity-Relationship Triple Extraction



Financial Flow Investigation & Report Generation

序列表SQL結果											
txn_hash	block_no	seq_no	txn_timestamp	txn_from	txn_to	addrtype_from	addrtype_to	txn_value	txntype	token_no	chain
9a6c1c124e4495	25	1245476770001	2025/5/11 12:50:00	0XA123254245	0X7A1781	PERM	EXCHG	500000	TRANSFER	15020	TRC20
4ad67789a01012	25	1245476780001	2025/5/11 12:50:00	0X7B9A8013	0X7A1781	PERM	EXCHG	400000	TRANSFER	15020	TRC20
6d3c4d3a4b76	25	1245486070005	2025/5/11 12:50:00	0X3222255755	0X7A1781	PERM	EXCHG	99999.99	TRANSFER	15020	TRC20
9a6c1c124e4495	26	1245486170001	2025/5/11 12:50:00	0X224444A555	0X7A1781	PERM	EXCHG	999999	TRANSFER	15020	TRC20
6d3c4d3a4b76	26	1245486170005	2025/5/11 12:50:00	0X1111B0B2	0X7B8222	PERM	EXCHG	999999	TRANSFER	15020	TRC20
9a6c1c124e4495	26	1245486170005	2025/5/11 12:50:00	0X1111B0B2	0X7B8222	PERM	EXCHG	300000	TRANSFER	15020	TRC20
6d3c4d3a4b76	26	1245486170013	2025/5/11 12:50:00	0X3222255755	0X7F6660	PERM	PERM	450000	TRANSFER	15020	TRC20
9a6c1c124e4495	27	1245486970016	2025/5/11 12:50:00	0X224444A555	0X7A1781	PERM	EXCHG	700000	TRANSFER	15020	TRC20
6d3c4d3a4b76	27	1245486970018	2025/5/11 12:50:00	0X7F66602277	0X3222255755	PERM	PERM	320000	TRANSFER	15020	TRC20



偵查發現：

1. 在過去一週內，錢包地址 `TQ9dZ2g4F4nPQVehWpkKedhaoGQhAr5c` 進行了多筆高頻次的加密貨幣交易，總共轉出 65.5 BTC。這些交易分別轉至 101 個不同的錢包地址，每筆交易金額介於 0.5 BTC 至 50 BTC 之間。
2. 此類高頻次且分散的交易模式常見於洗錢活動中，目的是藉由分散資金來掩蓋資金來源及去向。根據類似案件的經驗，此模式可能涉及詐騙集團使用「水房」進行資金漂白，藉由多筆錢包地址的使用來製造資金斷點。
3. 該錢包的活動與已知犯罪模式相符，推測其可能涉及非法活動，如詐欺或洗錢。尤其是在短時間內涉及大量不同錢包地址的交易，更加重了其可疑性。

偵查建議：

1. 建議深入分析轉出交易的對象錢包地址，特別是那些接收大額資金的地址，這些地址可能是詐欺集團或洗錢活動的關鍵節點。
2. 建議與國際加密貨幣交易所及區塊鏈分析公司合作，追蹤這些資金的最終去向，並確認是否有任何其他已知涉嫌非法活動的地址地址。
3. 應準備相關證據以支持未來的法律行動，包括但不限於交易記錄、錢包地址關聯性分析，以及可能的涉案人員資料。此舉將有助於進一步的起訴和凍結可疑資產。

偵查發現

調查推論

偵查建議

Financial Intelligence Assistant

In Q2, we also secured financial sector clients and provided them with AI search services.

- Intelligent customer service and employee training for life insurance industry
- Development of financial intelligence databases
- Conversion of financial crime characteristics and case selection

Credit Assessment Report Intelligence Gathering

應用情境 ex. 評估報告、投審報告...等

我想知道'偉康'2023年整體季報狀況，涵蓋營收、毛利率、稅後淨利、EPS以及現金股利的數據，並用一段話描述其中一季狀況。



以下是偉康科技2023年季報的摘要，涵蓋營收、毛利率、稅後淨利、EPS及現金股利等數據：

季度	營收	毛利率	稅後淨利	EPS (每股盈餘)	現金股利
2023 Q1	116,504,000	30.8%	4,701,000	0.33	2.80
2023 Q2	113,600,000	40.3%	14,095,000	0.98	-
2023 Q3	122,385,000	32.3%	6,516,000	0.45	-
2023 Q4	164,526,000	26.4%	2,878,000	0.20	-

在2023年第三季，偉康科技的營收達到122,385,000元，毛利為39,525,000元，毛利率約為32.3%。該季的稅後淨利為6,516,000元，對應的每股盈餘 (EPS) 為0.45元。此外，偉康科技現金股利為每股2.8元，顯示出公司在穩健的營運表現下，仍有能力回饋股東。

參考資料下載

Conversion of Criminal Characteristics into Query Criteria

自然語言規則描述

「籌備處帳戶於設立登記日前後 20 日，有逾資本額 50% 之款項大額提領」或「公司帳戶於變更登記日前後 20 日，有逾增資額 50% 之款項大額提領」

AI 進行語意理解、條件拆解

AI 自動生成 SQL

```
-- 規則 1：籌備處帳戶提領查詢
WITH 籌備處交易 AS (
  SELECT
    C.*,
    G.設立日期 AS 公司設立日期,
    NULL AS 最後變更日期,
    ABS(DATEDIFF(DAY, C.模擬交易時間, CAST(G.設立日期 AS DATETIME))) AS 日期差異,
    CASE
      WHEN C.模擬交易金額 > CAST(REPLACE(G.資本額, ',', '') AS INT) * 0.5 THEN 1
      ELSE 0
    END AS 超過百分之50
  FROM ... -- (略)
```

1. 籌備處帳號提領大於公司資本額 50%

Public Governance

In Q2, we secured multiple commissioned projects from government agencies and provided support for policy decision-making.

- Automated processing of personnel evaluation data.
- Extracted highlights of evaluation report and analyzed common issues.
- Integrated application of disaster-related data, including meteorological and hydrological information.

STEP 1：分析架構

根據主題和相關統計表格，請LLM設計撰寫架構，包括整體框架和各段落重點。

通報主題

為配合行政院「整體住宅政策實施方案」執行策略，內政部定期產製低度使用(用電)住宅、待售新成屋數據資訊，以供住宅相關政策參考。

統計表格

<<12680#12680_1>> 第1,111季至第1,112季全國低度使用(用電)住宅比率比較.pdf

<<12681#12681_1>> 第2,112季至第2,113季全國低度使用(用電)住宅比率比較(小於6%)縣市區.pdf

<<12682#12682_1>> 第3,112季至第3,113季全國低度使用(用電)住宅比率比較(大於20%)縣市區.docx

<<12683#12683_1>> 第4,111至第1,112季全國待售新成屋比率比較.pdf

<<12684#12684_1>> 第5,112至第4,113季全國待售新成屋比率比較(大於20%)縣市區.pdf

參考段落：<<12680#12680_1>> <<12683#12683_1>>

STEP 2：表格敘述

基於統計表格與調整後的架構，請LLM生成每張表格的敘述段落，產出通報初稿。

撰寫架構

一、引言
二、低度使用(用電)住宅統計分析
(一) 全國低度使用住宅的趨勢分析
1. 整體比率的變化
(二) 低度使用住宅比率比較
1. 比率較低的地區 (小於6%)
2. 比率較高的地區 (大於20%)
三、待售新成屋統計分析
(一) 全國範圍內待售新成屋的變化
(二) 112年第4季待售新成屋
1. 具體縣市區如新北市

四、政策建議
(一) 根據低度使用住宅的分
(二) 根據待售新成屋的資料

五、結論
(一) 重申資料分析的重要
(二) 強調政策訂應以資料

參考段落：<<12680#12680_1>> <<12683#12683_1>>

STEP 3：補充敘述

查找輿情或其他資料，請LLM生成推論回覆使用者問題，以補充通報內容。

問題

全國的低度使用住宅比率整體呈現上升趨勢的可能原因？

參考資料

<<WH_F0176#WH_F0176_0009>> 全國空屋率從9.33%創下新高後持續回升
上上新聞

<<WH_F0176#WH_F0176_0003>> 房價與租金全國趨勢分析
上上新聞

<<WH_N0260#WH_N0260_0036>> 內政部：去年上半年低度使用住宅比率33%全國
內政部

<<WH_N0007#WH_N0007_0003>> 內政部：去年上半年空屋率9.33%創下新高
內政部

<<WH_N0055#WH_N0055_0074>> 內政部：去年上半年空屋率9.33%創下新高
內政部

參考段落：<<WH_F0176#WH_F0176_0009>> <<WH_F0176#WH_F0176_0003>> <<WH_N0260#WH_N0260_0036>> <<WH_N0007#WH_N0007_0003>> <<WH_N0055#WH_N0055_0074>>

新北市三峽區有哪些河川水位觀測站，目前水位如何

新北市三峽區有以下水位觀測站及其對應水位：

- 橫溪站：目前水位31.09尺，超過一級警戒水位值，未超過二級警戒水位值，沒有三級警戒水位值。
- 三峽(2)站：目前水位28.23尺，超過一級警戒水位值，未超過二級警戒水位值，沒有三級警戒水位值。
- 海山橋站：目前水位33.02尺，超過一級警戒水位值，未超過二級警戒水位值，沒有三級警戒水位值。

簡述尼莎颱風造成的道路中斷

尼莎颱風導致的道路中斷主要發生在嘉義縣、高雄市、屏東縣、台東縣等地區的山區。這些地區因颱風豪雨造成落石、崩塌等坡地災害，進而導致道路中斷。具體而言，文章提到應特別注意的道路包括台20線、台29線、台3線、台18線、台24線、台9線、台23線等7條道路，這些道路易致災，且可能導致聚落成為孤島。

這些資訊凸顯了尼莎颱風對於特定地區交通連接的重大影響，特別是在山區和易淹水及沿海低窪地區。

3. Conclusion & Interactive Q&A Session

Thank You

For more information, please contact us

<http://www.eland.com.tw>

	2025 April–June (Q2)		2024 April–June (Q2)		YOY	2025 January–June (H1)		2024 January–June (H1)		YOY
	Amount	%	Amount	%	%	Amount	%	Amount	%	%
Net Operating Revenue	49,216	100.0%	44,851	100.0%	9.7%	93,191	100.0%	84,179	100.0%	10.7%
Operating Costs	9,251	18.8%	8,221	18.3%	12.5%	17,903	19.2%	15,735	18.7%	13.8%
Gross Operating Profit	39,965	81.2%	36,630	81.7%	9.1%	75,288	80.8%	68,444	81.3%	10.0%
Operating Expenses	25,608	52.0%	23,201	51.7%	10.4%	50,122	53.8%	46,009	54.7%	8.9%
Selling Expenses	7,903	16.1%	6,118	13.6%	29.2%	14,715	15.8%	12,583	14.9%	16.9%
Administrative Expenses	9,633	19.6%	9,542	21.3%	1.0%	18,827	20.2%	18,137	21.5%	3.8%
Research and Development Expenses	8,072	16.4%	7,574	16.9%	6.6%	16,580	17.8%	15,336	18.2%	8.1%
Expected Credit Impairment Losses (Reversal Gains)	-	0.0%	(33)	-0.1%	-100.0%	-	0.0%	(47)	-0.1%	-100.0%
Operating Profit	14,357	29.2%	13,429	29.9%	6.9%	25,166	27.0%	22,435	26.7%	12.2%
Non-operating Income and Expenses	952	1.9%	989	2.2%	-3.7%	1,817	1.9%	1,995	2.4%	-8.9%
Pre-tax Net Income	15,309	31.1%	14,418	32.1%	6.2%	26,983	29.0%	24,430	29.0%	10.5%
Income Tax Expenses	(2,502)	-5.1%	(2,450)	-5.5%	2.1%	(4,212)	-4.5%	(3,937)	-4.7%	7.0%
Net Income After Tax	12,807	26.0%	11,968	26.7%	7.0%	22,771	24.4%	20,493	24.3%	11.1%